

SUPPLEMENTARY INFORMATION

Djadjiling Rockshelter: 35,000 ¹⁴C Years of Aboriginal Occupation in the Pilbara, Western Australia

W. Boone Law, Dawn N. Cropper and Fiona Petchey

Table S1 Artefact counts by broad raw material categories. BIF = banded iron formation, SHG = goethitised shale.

Stratigraphic Layer	Raw Material	Flakes	Cores	Retouched/ Utilised Flakes	Flaked Pieces	Heat Shatter	Other	Total
		<i>n</i>	<i>n</i>	<i>n</i>	<i>n</i>	<i>n</i>	<i>n</i>	<i>n</i>
1a/b	Chert	32	0	4	10	5	0	51
	Quartz	0	1	0	2	0	0	3
	Shale/SHG	21	1	5	6	1	0	34
	BIF	32	0	2	1	5	0	40
	Indeterminate	1	0	0	0	0	0	1
	Total	86	2	11	19	11	0	129
2	Chert	16	0	16	5	8	0	45
	Quartz	9	0	0	2	0	0	11
	Shale/SHG	23	2	10	2	3	0	40
	BIF	45	1	7	1	0	0	54
	Indeterminate	0	0	0	1	1	0	2
	Total	93	3	33	11	12	0	152
3	Chert	33	0	8	17	14	0	72
	Quartz	0	0	0	1	0	0	1
	Shale/SHG	2	0	0	0	1	0	3
	BIF	5	0	0	0	0	0	5
	Total	40	0	8	18	15	0	81
4	Chert	65	2	10	20	27	0	124
	Quartz	3	0	1	3	0	0	7
	Shale/SHG	1	0	3	0	1	0	5
	BIF	16	0	1	0	0	0	17
	Total	85	2	15	23	28	0	153
5	Chert	18	1	15	9	5	1	49
	Quartz	5	1	1	13	0	0	20
	Shale/SHG	5	0	12	2	3	0	22
	BIF	29	2	11	1	1	0	44
	Indeterminate	0	0	0	1	0	0	1
	Total	57	4	39	26	9	1	136
6a/b	Chert	84	0	30	23	25	0	162
	Quartz	167	2	7	196	1	0	373
	Shale/SHG	51	2	16	9	3	0	81
	BIF	37	2	6	1	2	0	48
	Total	339	6	59	229	31	0	664
Total	700	17	165	326	106	1	1315	

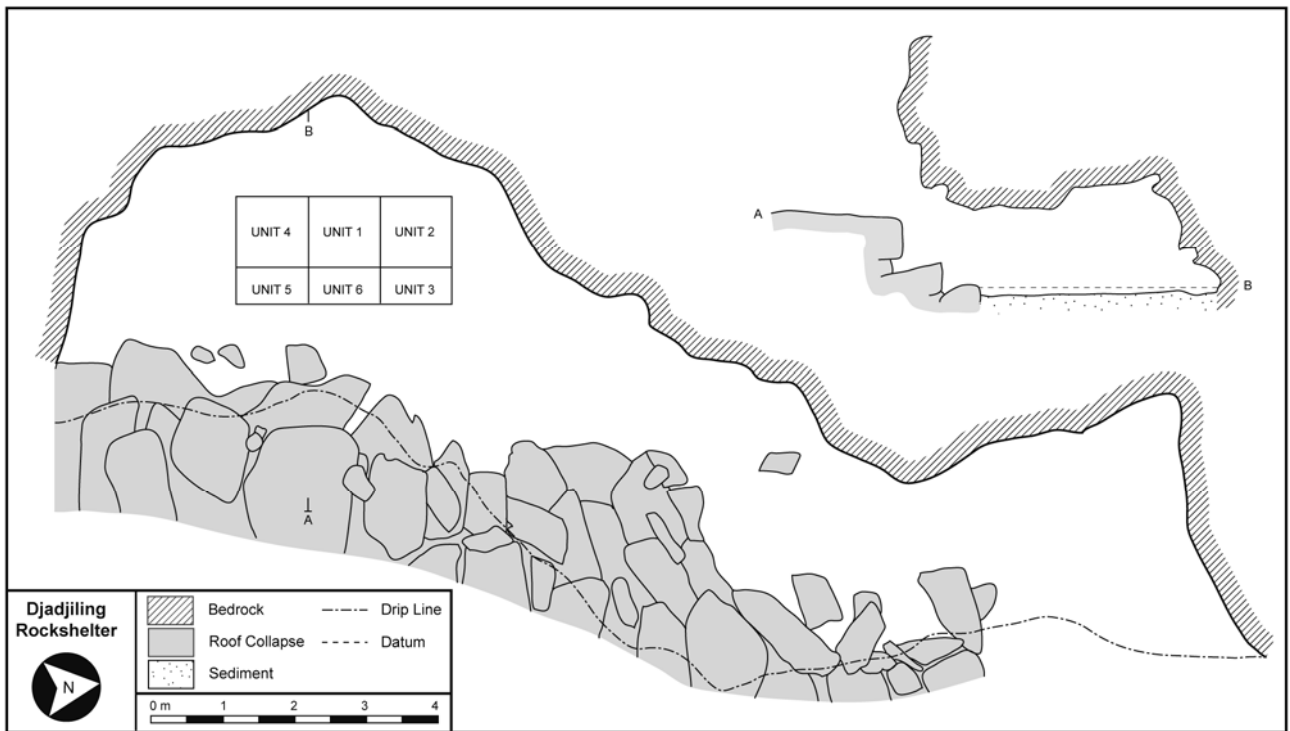


Figure S1 Djadjiling rockshelter.

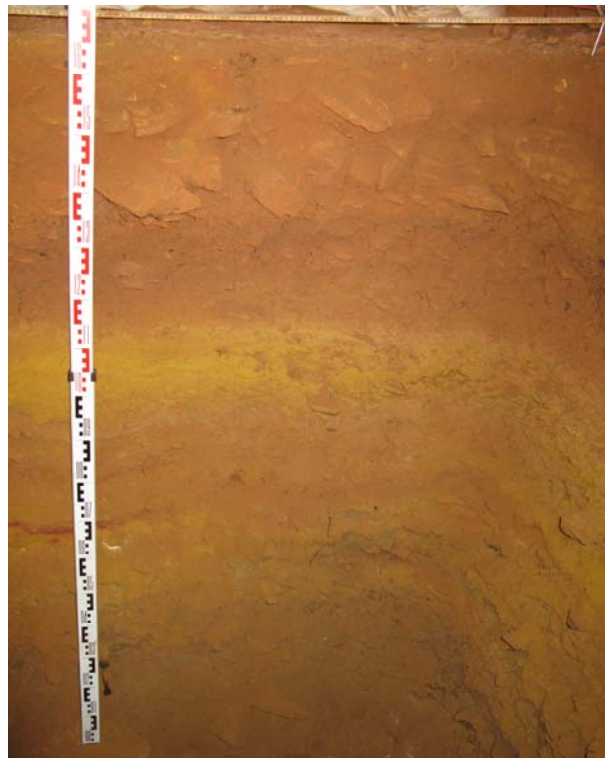


Figure S2 Photograph of eastern section of Unit 5 (Photograph: W. Boone Law).